

Tagliabue Fabbrica Orofa
in Milan since 1920



Fabbbrica Orafà Tagliabue

The origins of Tagliabue's artistic heritage date back to the beginning of the last century. Milan, still far from becoming one of the world fashion capitals, was a small but culturally fervent city as the sound of passing trams was echoing for the first time in the narrow streets around the famous La Scala Opera House. Just a few steps away, right next to Accademia di Brera, the very heart of the city's artistic expression, Mario Tagliabue challenged his first crafts. The founding father of Fabbbrica Orafà Tagliabue then moved for some years to Paris, gathering experience and technique in a renowned French atelier. After WWI he came back to his beloved Milan and in 1920 he started his own business. Passion and creativity allowed him to establish himself as one of the city's most appreciated goldsmiths.

In the early 1950s his son Carlo joined the firm: his exceptional artistic talent rapidly earned the creations of Fabbbrica Orafà Tagliabue the fame of being unique and exclusive masterpieces. Interpreting the customers' wishes, translating them first in a draft on paper and only after several discussions with the customers themselves shaping the final idea into a gold sculpture has been for decades the way to offer our customers the opportunity to let their own aspirations come to life.

In May, 1985, the Town Hall of Milan supported a Tagliabue exposition in the central Piazza del Duomo (Arengario Building), as a tribute to a leading character of the city's authentic taste for art and design. At the same time Tagliabue's creations were gaining recognition and appreciation even abroad and enthusiastic customers came from overseas to discover in Tagliabue's atelier the true essence of our city's lifestyle and creativity.

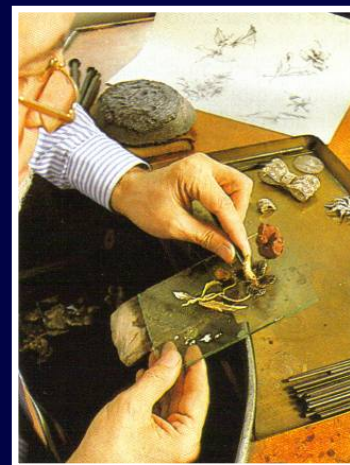


Tagliabue Fabbbrica Orafà

in Milan since 1920



Today, as the century milestone comes closer and the business is led by the third and fourth generation of the Tagliabue family, the way to approach our customers is still the same: product innovation and technical advances did not change our inborn ambition to be the ones who help our customers to fix their emotions in a masterpiece, that will keep them alive forever.



Collections

Our main mission has always been to shape unique and exceptional masterpieces starting from our customers' desires. However, our artistic record of almost one century allows us to also offer several collections in small series, which embody our own synthesis of the Italian taste for artistic design.

Flower collection

To celebrate the 100th anniversary (1909 – 2009) from the first jewel by Tagliabue we realized an artistic interpretation of the flowers which every spring cheer up Milan gardens with their colours. In every single piece we feel, isolate and bring back to life the infinite elements of light, colour and shape which form the marvellous book of nature, providing them with a new soul through our gold and precious stone sculpting.



Tagliabue Fabbrica Orafa
in Milan since 1920



Tagliabue Fabbrica Orefa
in Milan since 1920



1. Rose Brooch

*Yellow and white gold (18 kt)
Height: 12 cm
Weight: 38,00 g*

4. Iris Brooch

*Yellow and white gold (18 kt)
Height: 10 cm
Weight: 68,50 g*

2. Calla Bracelet

*Yellow and white gold (18 kt)
Weight: 87,10 g*

5. Blackberry branch

*Yellow gold (18 kt) and semi-
precious stones
Height: 15 cm
Weight: 124,10 g*

3. Calla Necklace

*Yellow and white gold (18 kt)
Weight: 106,30 g*

6. Flower Pochette

*White gold (18 kt)
Height: 9 cm
Length: 25 cm*





7. Poppy Brooch

Yellow and white gold (18 kt)

Height: 14,5 cm

Weight: 63,50 g

Rubies: n. 394; kt 23,22

Diamonds: n. 295; kt 4,47

8. Rose Brooch

Yellow and white gold (18 kt)

Height: 12 cm

Weight: 51,70 g

Diamonds:

- n. 271; kt 8,52

- n. 318; kt 4,36

- n. 1; kt 0,30



Tagliabue Fabbrica Orofa

in Milan since 1920



9. Daisy Brooch

Yellow and white gold (18 kt)

Height: 12 cm

Weight: 22,30 g

10. Convolvulus Brooch

Yellow and white gold (18 kt)

Height: 12 cm

Weight: 52,80 g

11. Poppy table place-marker

Yellow and white gold (18 kt)

Height: 12 cm

Weight: 32,80 g

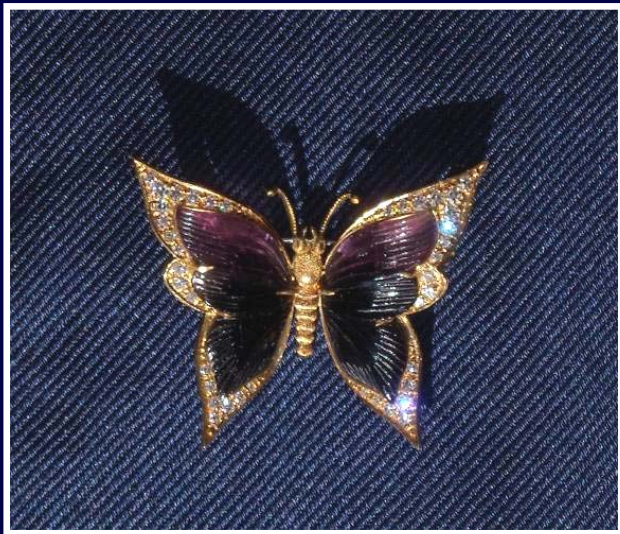
12. Mirabilis jalapa table place-marker

Yellow and white gold (18 kt)

Height: 12 cm

Weight: 30,50g





14. Butterfly Brooch

Yellow and white gold (18 kt)

Height: 4 cm

Weight: 9,30 g

Diamonds:

- n. 58; kt 0,98

15. Poppy Bud Brooch

Yellow and white gold (18 kt)

Height: 5,50 cm

Weight: 11,20 g

16. Poppy Bud Earrings

Yellow and white gold (18 kt)

Height: 2,80 cm

Weight: 14,20 g



Tagliabue Fabbrica Orofa

in Milan since 1920



18. Primrose Necklace

White gold (18 kt)

Height: 3,50 cm

Weight: 27,40 g

Diamonds:

- n. 58; kt 1,04

Rings and earrings are also available.

19. Leaf Necklace and Earrings

White gold (18 kt)

Weight: 18,80 g

Diamonds:

- n. 55; kt 3,21



Tagliabue Fabbrica Orofa

in Milan since 1920



20. *Bracelet shaped as a bouquet of flowers*

21. *A touch of antique in this precious powder compact*





*22. Gold and rubies strawberry composition for
an ice-bucket*



Contacts:

Phone: +39 02 92875646

www.tagliabue.go.it

info@tagliabue.go.it



Tagliabue Fabbrica Orofa

in Milan since 1920